

LATITUDE

OFFSET PEDESTAL FOOT / OFFSET HEADRAIL

Toilet partitions in the Latitude Cubicle System available in both 13mm compact laminate and 18mm MR Board.

Shower partitions available in 13mm compact laminate only.

Overall Height: 2100mm.

Overall Depth: 1500mm to 1800mm.

Division Panels: 2100mm high including 100mm floor clearance.

Frontal Panels: 2100mm high including 100mm floor clearance, minimum width 250mm, maximum 450mm.

Doors: 2000mm high with 100mm floor clearance x 600mm wide.

Ambulant doors require a 700mm clearance opening as per AS1428.1-2009.

Privacy profile option available.

Door Hardware: Aqua Series door hardware available in satin chrome or satin matte black finish.

Door hardware kit includes indicator, lockset, bumper, hinges and coat hook.

Bolt through option available.

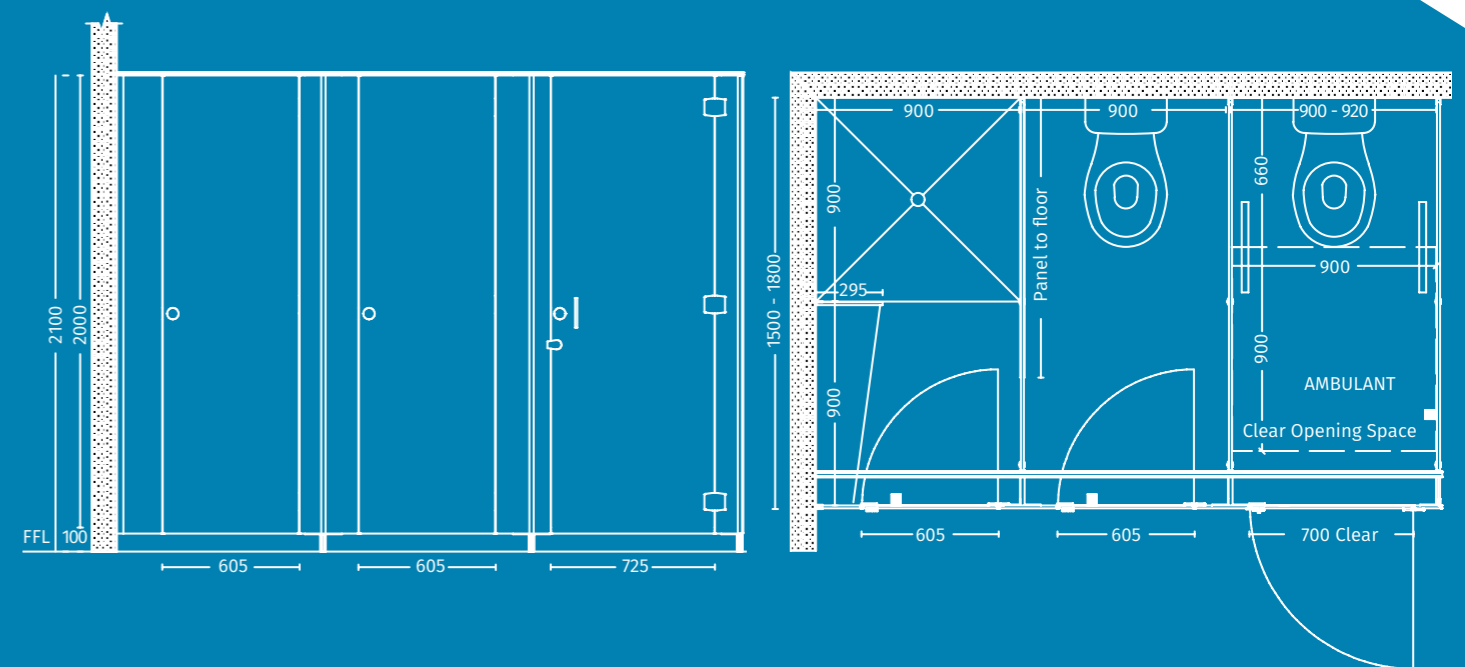
Fittings: Headrail - Offset clear anodised aluminium slimline headrail.

Pedestal - Offset clear anodised aluminium foot.

Wall channels - Clear anodised aluminium U channel.

Powdercoating option available.

Fixings: All in 304 stainless steel.



DOORS: MAICA INVISI BLACK
FRONTALS: MAICA INVISI BLACK